

iC3000

The complete Development Tool Solution for Freescale 68HC08

iSYSTEM offers a complete tool solution for embedded systems design and test for Freescale 68HC08 family:

The 68HC08 is a very popular core especially in the automotive industry. The system is based on iSYSTEM's iC3000 ActiveEmulator and winIDEA, iSYSTEM's Integrated Development Environment and Debugger.

The In-Circuit Emulator is a full-blown high-performance development system. iC3000 ActiveEmulator will be connected to the ActivePOD for 68HC08.

The system supports stand-alone operation without target and complete In-Circuit Emulation (ICE) at the target system, where the 68HC08 micro controller is replaced by the ActivePOD with a target solder adapter.

Full ICE-Debug functions are supported, complete bus trace and performance analysis.

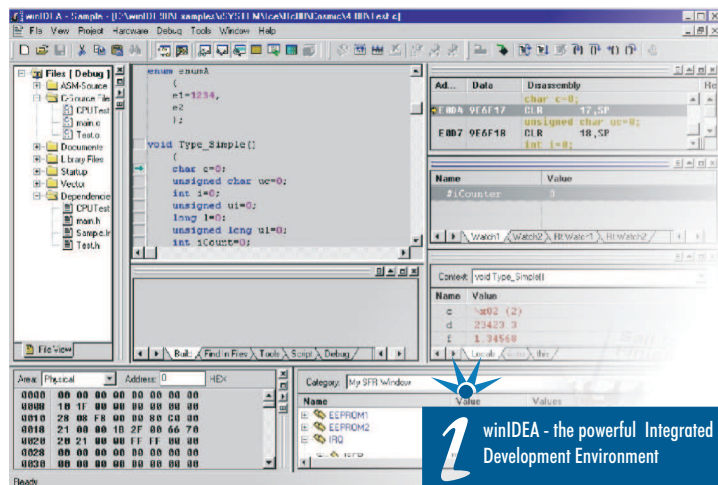
The iC3000 ActiveEmulator connects to the host PC by USB or Ethernet interfaces for fast communication with winIDEA IDE/Debugger.

The winIDEA supports Windows NT/2000 and XP as host operating system platforms.

All famous C/C++ compilers for 68HC08 can be integrated into winIDEA.

iC3000 with ActivePOD In-Circuit Emulation Features

- Based on standard 68HC08 microcontrollers
- 128 KByte Overlay Emulation Memory
- 128K HW Breakpoints
- Access Breakpoints
- Real-Time Memory Access
- Real-Time In-Circuit Emulation at full Speed
- HLL Debugging (ASM/C/C++)
- Call Stack, SFR Window, Memory Window
- 128K Frames Trace Buffer
- Advanced Trace Trigger & Qualifier
- Performance Analysis
- Trigger Input/Output
- 16 AUX inputs - 200MHz sampling rate



1 winIDEA - the powerful Integrated Development Environment

