
Adapters

IA100EC1420

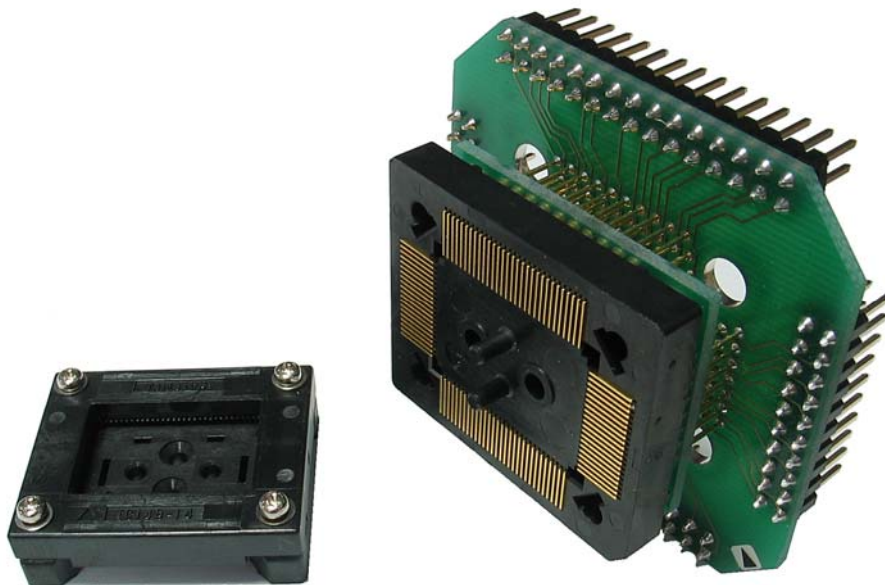
Target CPU package: QFP100
Body size: 14 mm x 20 mm
Pitch: 0.65 mm
POD target layout: T_QFP100

Can be used with:

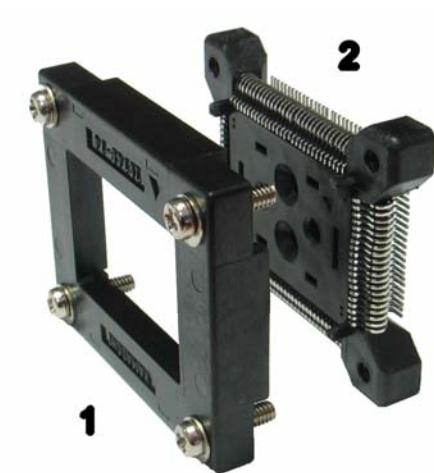
- 80186EC POD

Described adapter parts can be used only with listed PODs. Disregarding this warning may result in a hardware failure of the target and the emulation system.

The IA100EC1420 adapter consists of two parts. In this document, they are named IA100EC1420-FIXED and IA100YAM1420-S to simplify the assembly instructions. Note that the IA100EC1420-FIXED is not an ordering code while the IA100YAM1420-S is also an ordering code and can be ordered separately.



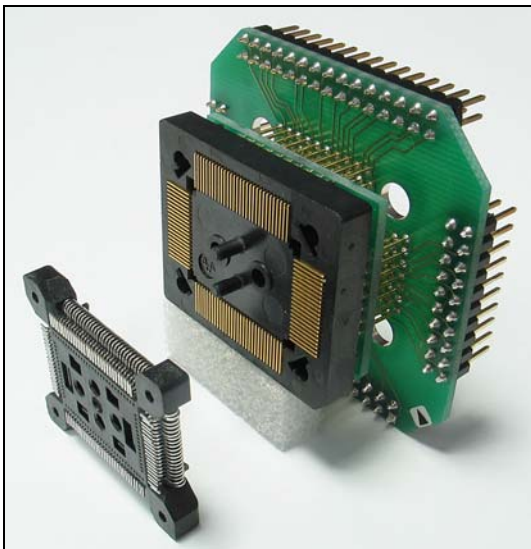
IA100EC1420 adapter: IA100YAM1420-S on the left and IA100EC1420-FIXED on the right



IA100YAM1420-S

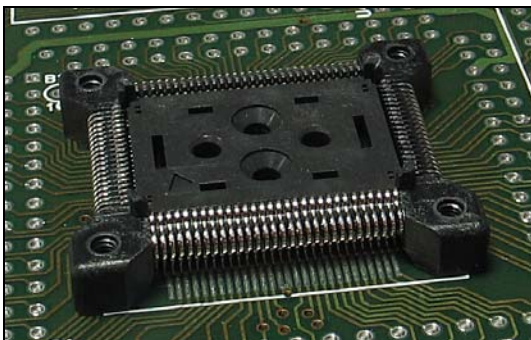
► Assembly

Pay attention to pin 1 while assembling the adapter and connecting the POD to the target. Improper assembly or use of the adapter or even incorrect adapter used with your particular POD can damage the emulation system and the target.



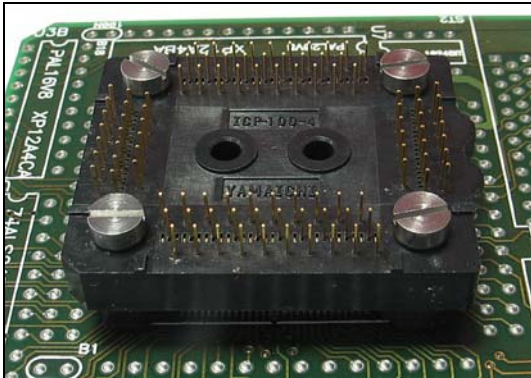
Adapter parts necessary for connecting the POD to the target.

Step 1: Solder the IA100YAM1420-S (part 2) to the target PCB.

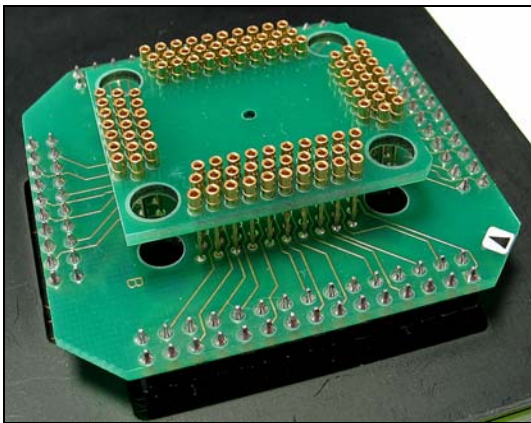


Step 2: Disassemble the IA100EC1420-FIXED.

Step 3: Place the IA100EC1420-FIXED (part 2) on top of the soldered IA100YAM1420-S (part 2) and screw both together with four long (12 mm) screws.



Step 4: Connect the IA100EC1420-FIXED (part 1) to the POD.



Step 5: Connect the POD to the target via IA100EC1420-FIXED.

It is recommended to use plastic posts if they are shipped beside the POD to establish an adequate mechanical stability of the connection.

Precaution must be taken after the POD is connected to the target. Adapter parts may break due to the user carelessness.

Inserting the CPU to the target

The target CPU can be connected to the target instead of the POD by using the IA100YAM1420-S. This is very convenient for the ultimate test of the target system.

Phase 1: Solder part 2 of the IA100YAM1420-S to the target.

Phase 2: Insert the CPU.

Phase 3: Put part 1 of the IA100YAM1420-S on top and screw it down with four short (8 mm) screws.