

---

## Adapters

### IA100EC1919

Target CPU package: QFP100  
Body size: 19 mm x 19 mm  
Pitch: 0.635 mm  
POD target layout: T\_QFP100

Can be used with:

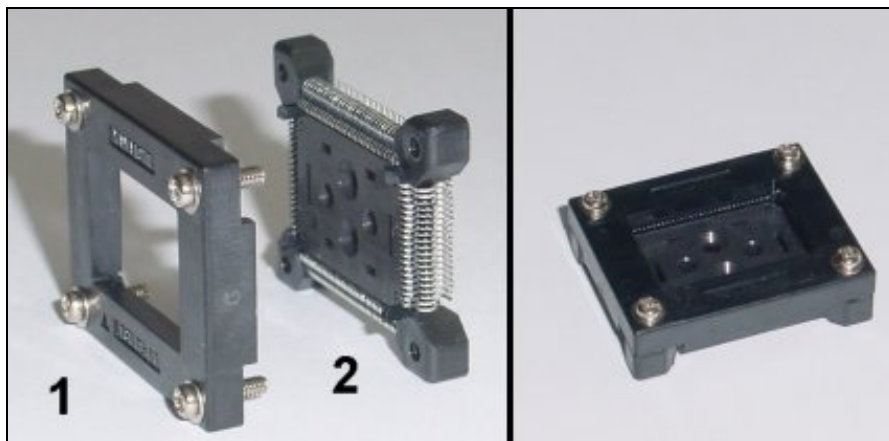
- 80C186EC POD

---

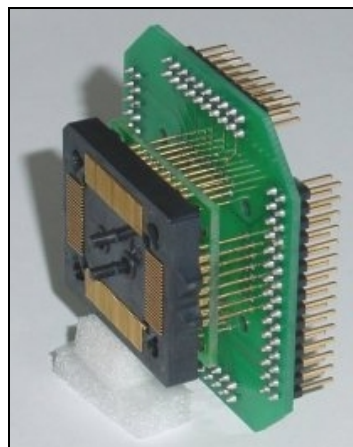
**Described adapter parts can be used only with listed PODs. Disregarding this warning may result in a hardware failure of the target and the emulation system.**

---

The IA100EC1919 adapter consists of two parts. In this document, they are named IA100EC1919-FIXED and IA100YAM1919-S to simplify the assembly instructions. Note that the IA100EC1919-FIXED is not an ordering code while the IA100YAM1919-S is also an ordering code and can be ordered separately.



IA100YAM1919-S

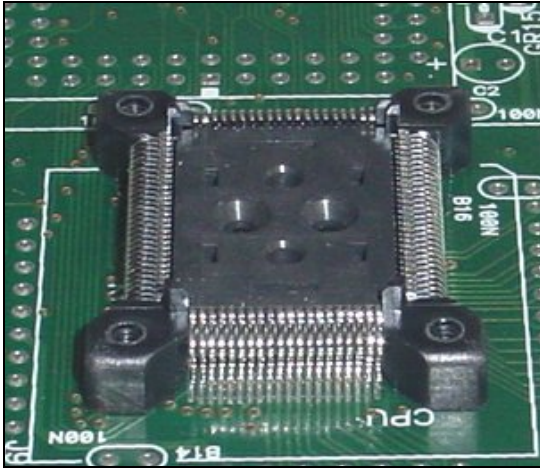


IA100EC1919-FIXED

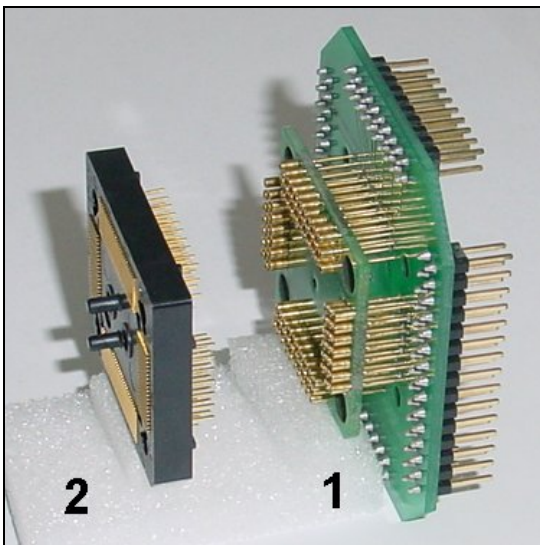
## ► Assembly

Pay attention to pin 1 while assembling the adapter and connecting the POD to the target. Improper assembly or use of the adapter or even incorrect adapter used with your particular POD can damage the emulation system and the target.

**Phase 1:** Solder the IA100YAM1919-S (part 2) to the target PCB.



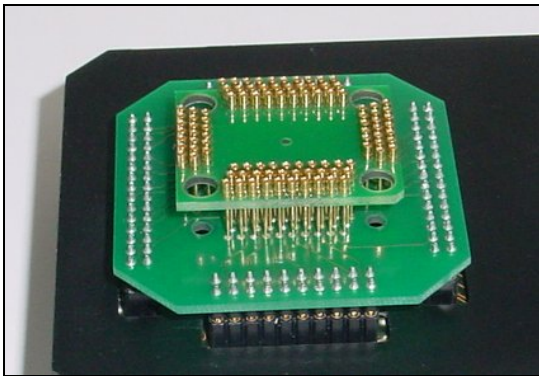
**Phase 2:** Disassemble the IA100EC1919-FIXED.



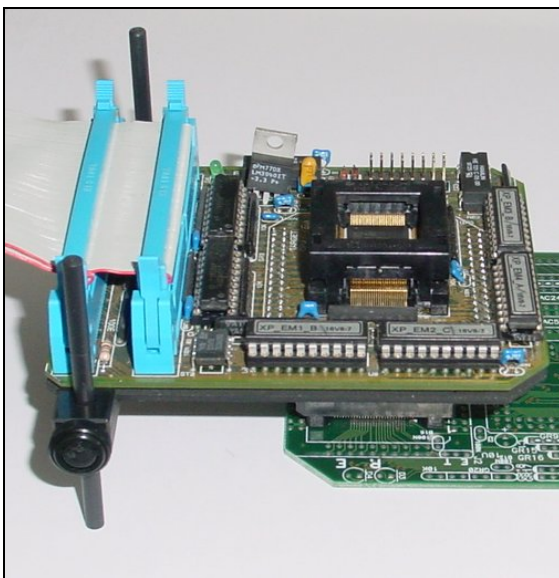
**Phase 3:** Place the IA100EC1919-FIXED (part 2) on top of the soldered IA100YAM1919-S (part 2) and screw both together with four long (13 mm) screws.



**Phase 4:** Connect the IA100EC1919-FIXED (part 1) to the POD.



**Phase 5:** Connect the POD to the target via IA100EC1919-FIXED. It is recommended to use plastic posts (if shipped with the POD), to establish adequate mechanical stability.



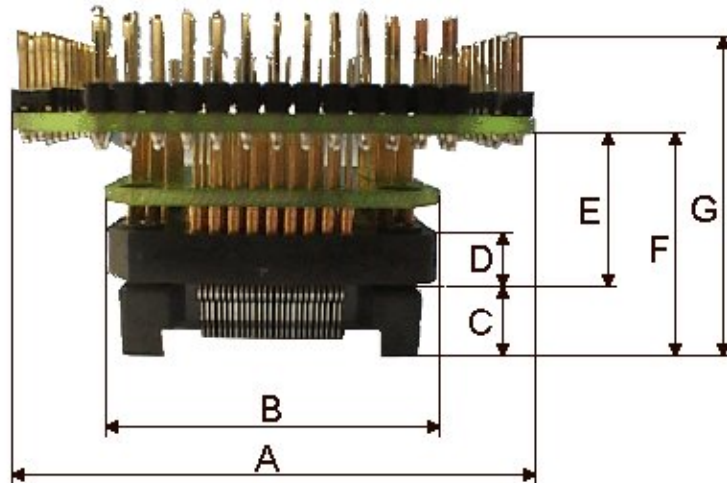
---

Precaution must be taken after the POD is connected to the target. Adapter parts may break due to the user carelessness.

---

## ► Dimensions

(Unit : mm)	A	B	C	D	E	F	G
<b>IA100EC1919</b>	55 x 55.5	35.3 x 35.3	11.5	5	15.5	20.5	31



## Inserting the CPU to the target

The target CPU can be connected to the target instead of the POD by using the IA100YAM1919-S. This is very convenient for the ultimate test of the target system.

**Phase 1:** Solder part 2 of IA100YAM1919-S to the target.

**Phase 2:** Insert the CPU.

**Phase 3:** Put part 1 of the IA100YAM1919 on top and screw it down with four short (8 mm) screws.

