

Adapters

IA132P144QFP302

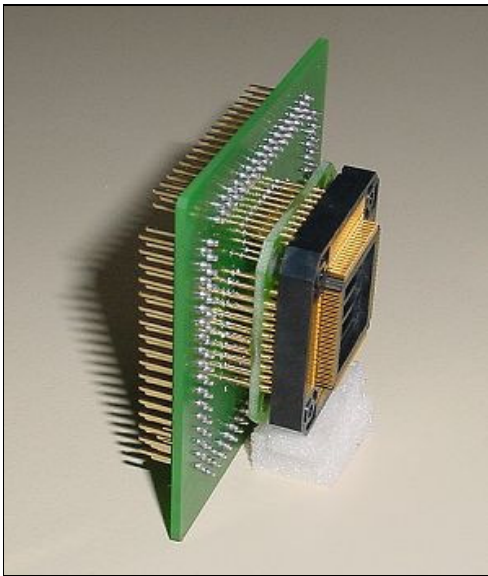
Target CPU package: QFP144
Body size: 20 mm x 20 mm
Pitch: 0.5 mm
POD target layout: T_QFP132

Can be used with:

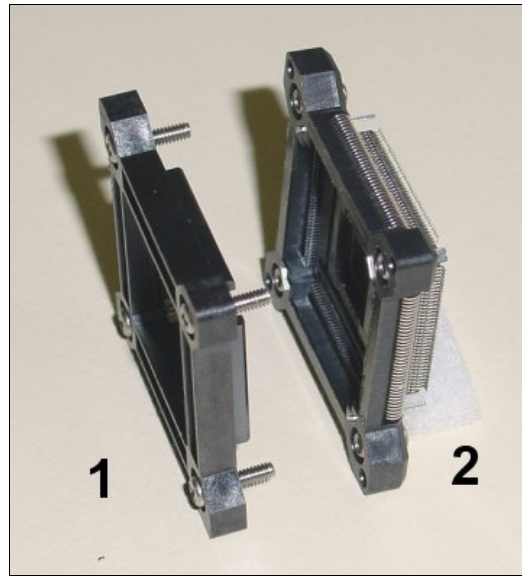
- MC68302 POD
- MC68302 Active POD

Described adapter parts can be used only with listed PODs. Disregarding this warning may result in hardware failure of the target and the emulation system.

The IA132P144QFP302 adapter consists of two parts. In this document, they are named IA132P144QFP302-FIXED and IA144YAM-SOLDER to simplify the assembly instructions. Note that IA132P144QFP302-FIXED is not an ordering code. However, IA144YAM-SOLDER part can be ordered as a spare part.

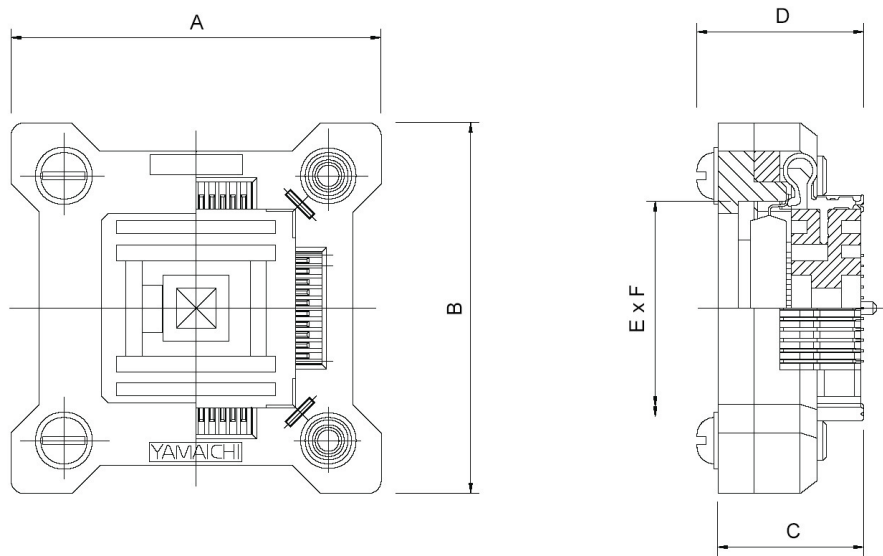


IA132P144QFP302-FIXED



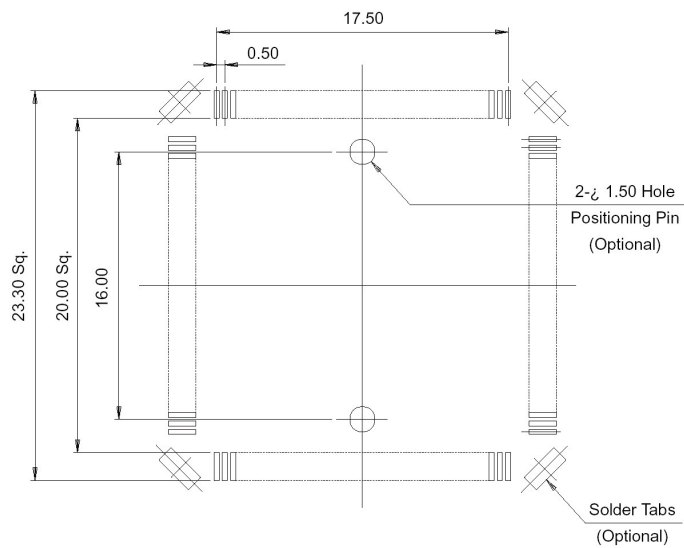
IA144YAM-SOLDER

Solder part, which is soldered down to the target.



A	B	C	D	E x F
34.20	34.20	12.30	12.60	21.14 x 21.14

Socket Dimensions (Units: mm)

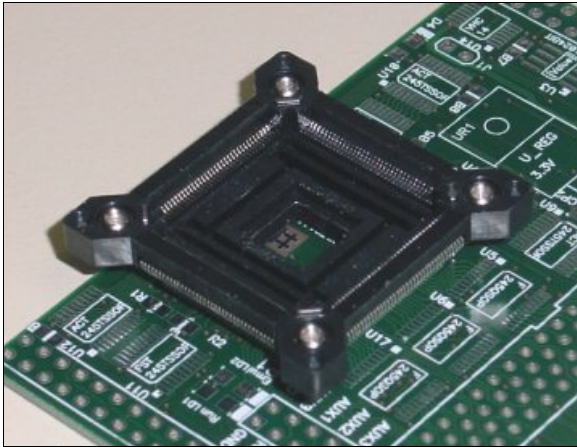


PCB Layout (Units: mm)

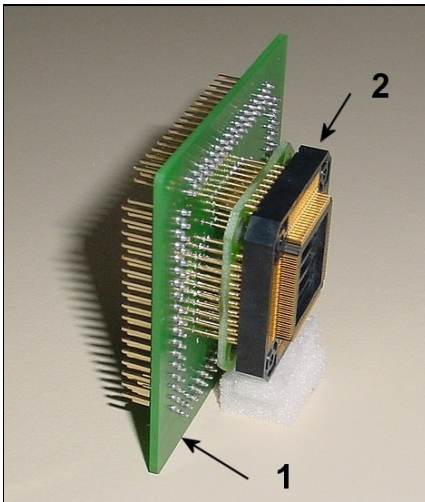
► Assembly

Pay attention to pin 1 while assembling the adapter and connecting the POD to the target. Improper use of the adapter or even incorrect adapter used with your particular POD can damage the emulation system and the target.

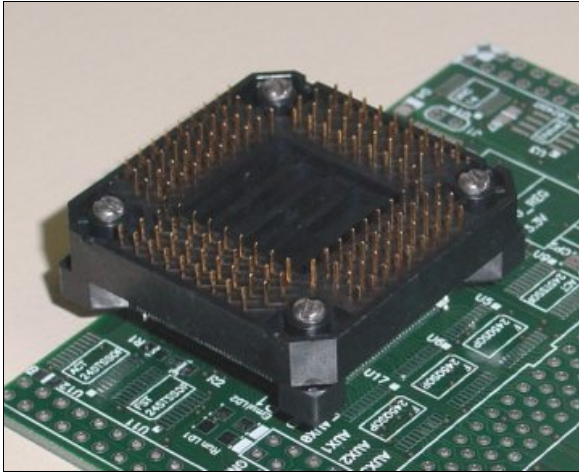
Phase 1: Solder the IA144YAM-SOLDER (part 2) to the target PCB.



Phase 2: Disassemble the IA132P144QFP302-FIXED.



Phase 3: Place the IA132P144QFP302-FIXED (part 2) on top of the soldered IA144YAM-SOLDER (part 2) and screw them together with four long (12 mm) screws.



Phase 4: Connect the IA132P144QFP302-FIXED (part 1) to the POD.

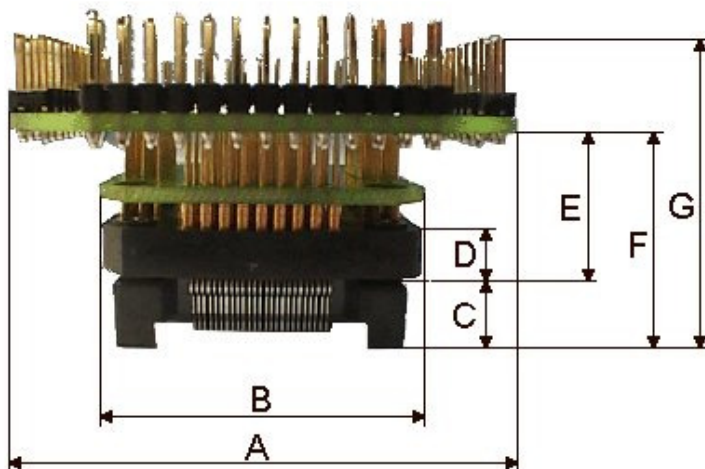
Phase 5: Connect the POD to the target via IA132P144QFP302-FIXED.

It is recommended to use plastic posts shipped beside the POD to establish an adequate mechanical stability of the connection.

Note that some precaution must be taken to the POD adaptation after the POD is connected to the target. Otherwise, the part soldered to the target may break off.

► Dimensions

(Unit : mm)	A	B	C	D	E	F	G
IA132P144QFP302-FIXED	64 x 64	36 x 36	8.5	5.5	15	23.5	33.5



Connecting the CPU directly to the target

Using the IA144YAM-SOLDER, the CPU can be connected directly to the target, which is very suitable for an ultimate test.

Phase 1: Solder part 2 of the IA144YAM-SOLDER to the target.

Phase 2: Insert the CPU.

Phase 3: Place over part 1 of the IA144YAM-SOLDER and screw it down with four short (8 mm) screws.



IA144YAM-SOLDER used to insert the CPU directly to the target