

Adapters

QFP160 - TET

Target CPU package: QFP160
 Body size: 28 mm in x 28 mm
 Pitch: 0.65 mm
 POD target layout: T_QFP160

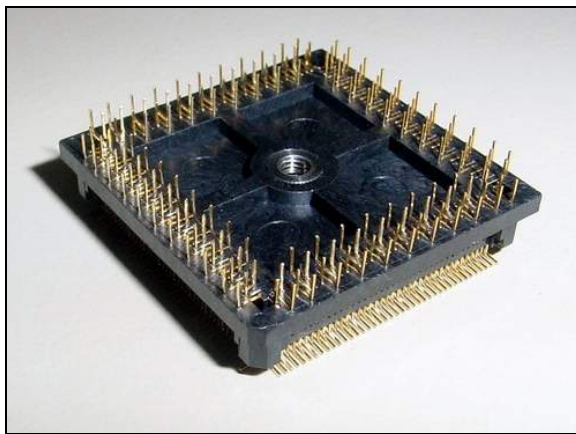
Can be used with:

- MC68336 POD

Note that adapter solutions stated in the document can be used only with listed PODs. Disregarding this warning may result in hardware failure of the target and the emulation system.

► Available Adapter Parts (by ordering code):

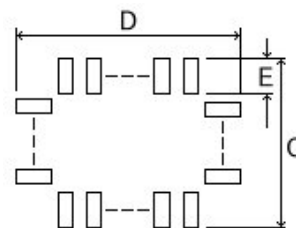
- IA160TQ-SOLDER



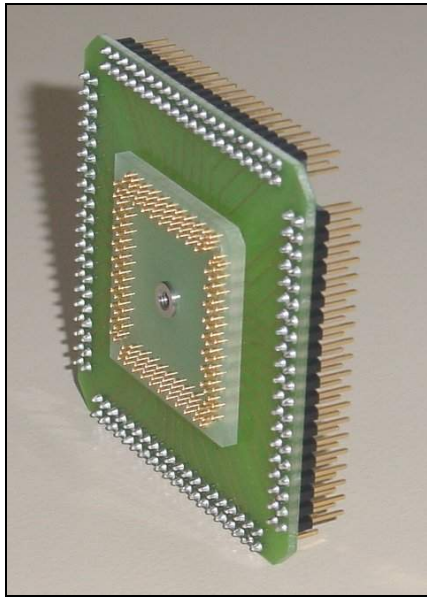
Solder part, which is being soldered to the target.

Recommended PCB footprint size (by TET):

(Unit : mm)		
C Size	D Size	E Size
31	31	2.3

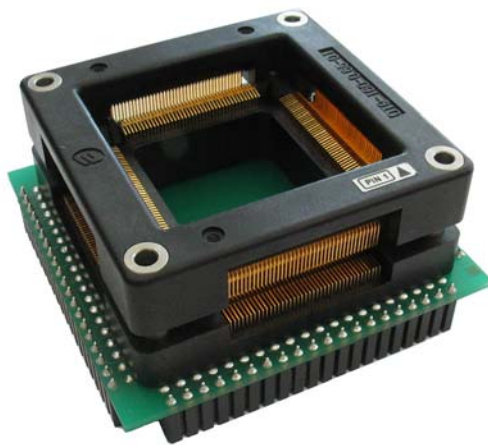


- **IA160TQ-FIXED**



The IA160TQ-FIXED represents fixed inflexible connection between the POD and the target.

- **IA160TQSOC**



The IA160TQSOC is used to connect the CPU directly to the target.

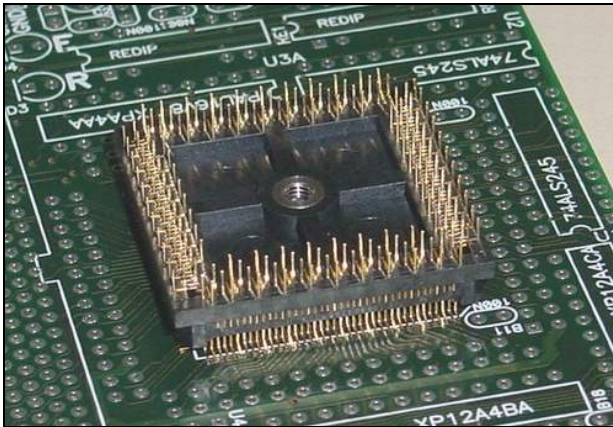
Fixed Adapter

The IA160TQ-FIXED and the IA160TQ-SOLDER are essential parts required to adapt the POD to the target QFP160 package. First, the IA160TQ-SOLDER is soldered to the target and then the POD is connected to it via the IA160TQ-FIXED.

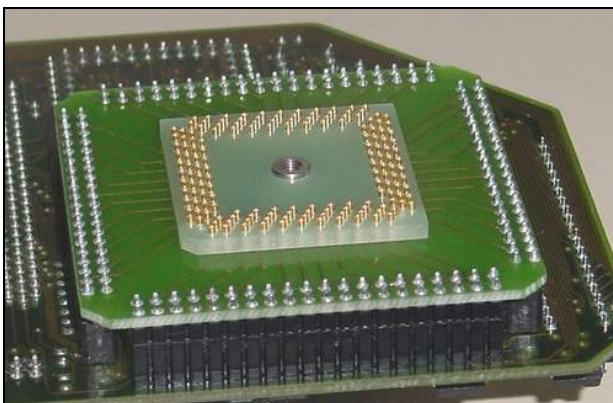
► Assembly

While assembling the adapter and connecting the POD to the target, pay attention to pin 1 to prevent any damages of the hardware, which may result from incorrect assembly.

Phase 1: Solder the IA160TQ-SOLDER to the target PCB.



Phase 2: Connect the IA160TQ-FIXED (POD side) to the POD.



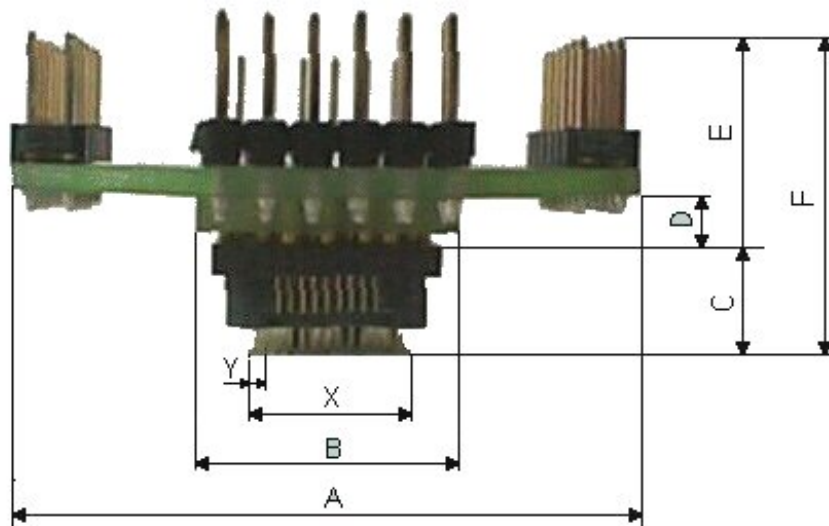
Phase 3: Connect the POD to the target via IA160TQ-FIXED.



Note that some precaution must be taken to the POD adaptation after the POD is connected to the target. Otherwise, the part soldered to the target may break off.

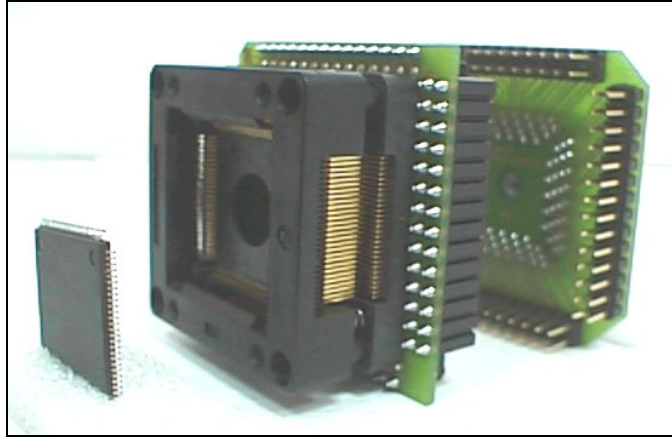
► Dimensions

(Unit : mm)	A	B	C	D	E	F	X	Y
Fixed Adapter - QFP160	64	34	7	4	14	21	30 x 30	1.65



Inserting the CPU to the target

Using the IA160TQ-SOLDER and the IA160TQ-FIXED in combination with the IA160TQSOC, the CPU can be connected to the target. It's very suitable for final tests.



Note that above picture does not depict actual QFP160 adapter parts.

Notes:

Notes:

Notes: