

Adapters

QFP80 TET

Target CPU package: QFP80
 Body size: 14 mm x 14 mm
 Pitch: 0.65 mm
 POD target layout: T_QFP112

Can be used with:

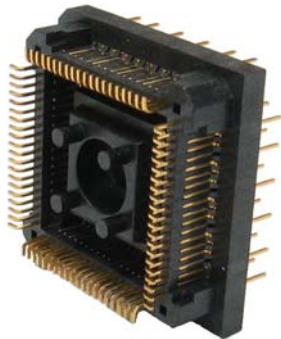
- MC9S12DP512 Active POD

This adapter is used when MC9S12DP512 POD emulates MC9S12Cxxx, MC9S12Qxxx and MC9S12GCxxx devices in the QFP80 package.

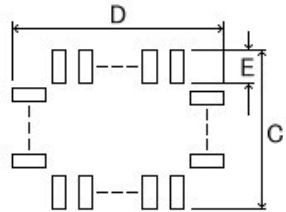
Described adapter parts can be used only with listed PODs. Disregarding this warning may result in a hardware failure of the emulation system and the target.

► Available Adapter Parts (by ordering code):

- **IA80TQ-SOLDER**

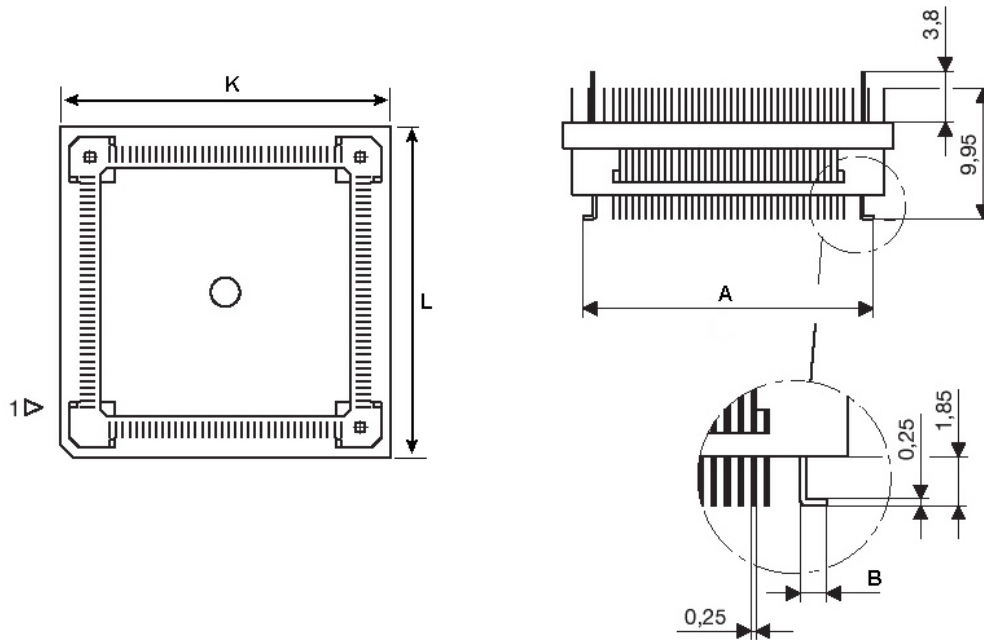


Solder part, which is soldered to the target



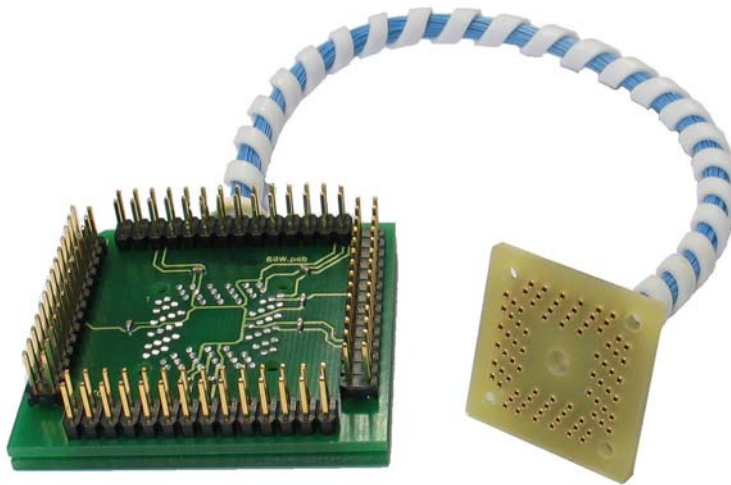
(Unit: mm)						
A	B	C	D	E	K	L
16	1.150	17.0	17.0	1.8	19.0	19.0

Recommended (by TET) PCB footprint size



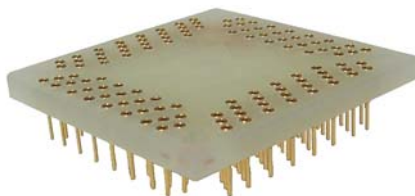
IA80TQ-SOLDER dimensions

- **IA112P80TQ-W-C**



The IA112P80TQ-W-C represents flexible connection between the POD and the target.

- **IA80TQEXT**

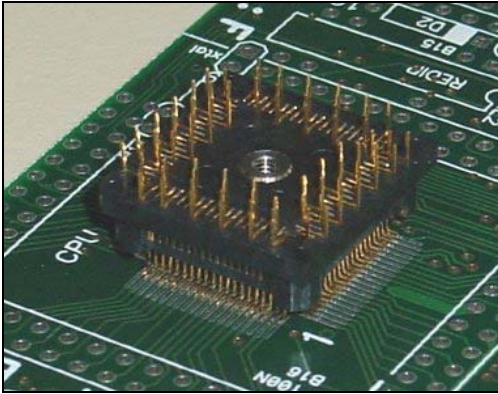


The IA80TQEXT is a 3 mm extension, which can be used as a “socket saver” to protect the more expensive IA80TQ-SOLDER part which may be damaged due to the carelessness when connecting/disconnecting the POD from the IA80TQ-SOLDER part.

► Assembly

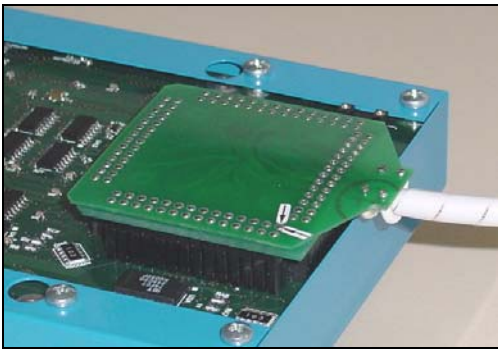
While assembling the adapter and connecting the POD to the target, pay attention to pin 1 to prevent any damages of the hardware, which may result from incorrect assembly.

Step 1: Solder the IA80TQ-SOLDER to the target PCB.

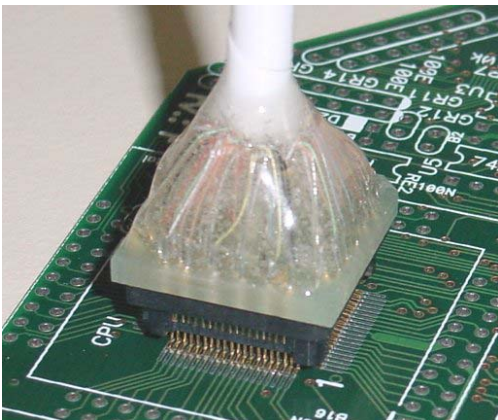


Now, if optionally the IA80TQEXT is used, it must be placed on top. It is not used in this particular case.

Step 2: Connect the IA112P80TQ-W-C to the POD.



Step 3: Finally, connect the POD to the target.



Precaution must be taken after the POD is connected to the target. Adapter parts may break due to the user carelessness.
