
POD Hardware Reference

COP8ROM ActivePOD Rev. R01

Ordering code	IC30460
---------------	---------



Thank you for purchasing this product from iSYSTEM. This product has been carefully crafted to satisfy your needs. Should any questions arise, do not hesitate to contact your local distributor or iSYSTEM directly. Our technical support personnel will be happy to answer all your technical support questions.

All information, including contact information, is available on our web site www.isystem.com. Feel free also to explore our alternative products.

This document and all documents accompanying it are copyrighted by iSYSTEM and all rights are reserved. Duplication of these documents is allowed for personal use. For every other case a written consent from iSYSTEM is required.

Copyright © 2005 iSYSTEM, GmbH.
All rights reserved.
All trademarks are property of their respective owners.

POD Hardware Reference

COP8ROM ActivePOD Rev. R01

Ordering code	IC30460
POD Speed (MHz)	20
Trace buffer size	64k frames

This Active POD can be used connected to iC3000(HS) or iC4000 Emulator through the iBUS Active Emulator/Trace interface.



ActivePOD

Emulated CPU
COP8TAB5
COP8TAC5

This ActivePOD supports all COP8 ROM based CPUs with COP8 ICEROM interface.

POD Target Pinout

A special ICEROM interface connector must be present on the target. The following pinout is valid on the target side:

Description	Signal	Pin	Pin	Signal	Description
Power Supply	VCC	1	2	VCC	Power Supply
CPU Reset Input to the Emulator	TRESET_IN	3	4	RESET	CPU Reset Output from the Emulator
Reconstructed Port by the Emulator	TG0	5	6	G0	CPU Port for the Emulator
Reconstructed Port by the Emulator	TG1	7	8	G1	CPU Port for the Emulator
Reconstructed Port by the Emulator	TG2	9	10	G2	CPU Port for the Emulator
Ground	GND	11	12	GND	Ground
Reconstructed Port by the Emulator	TG3	13	14	G3	CPU Port for the Emulator

ICEROM 14-pin target connector

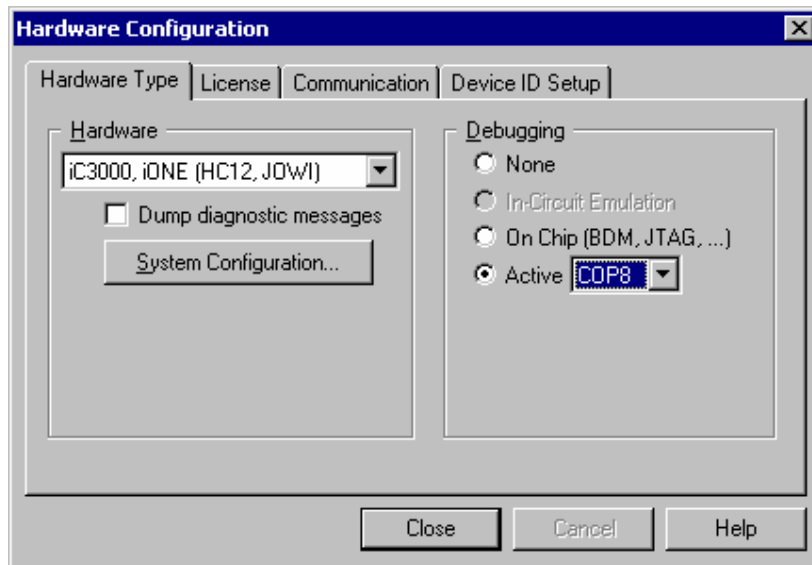
Emulation Notes and Electrical Differences

The CPU ports PG0, PG1, PG2 and PG3 are used for emulation and are rebuilt by the Emulator. The electrical characteristics of these ports are not 100% identical.

On these pins a weak pull-up (22k) is always enabled, while on the real CPU the pull-up is selectable by software.

Using the POD

To select the POD, install winIDEA, open Hardware/Hardware configuration dialog, select IC3000 for the Emulator, and Active COP8 as Debugging type.



Voltage Range

This POD is constructed to be able to work with a wide voltage range. The voltage range supported is between 1.62V and 3.6V.