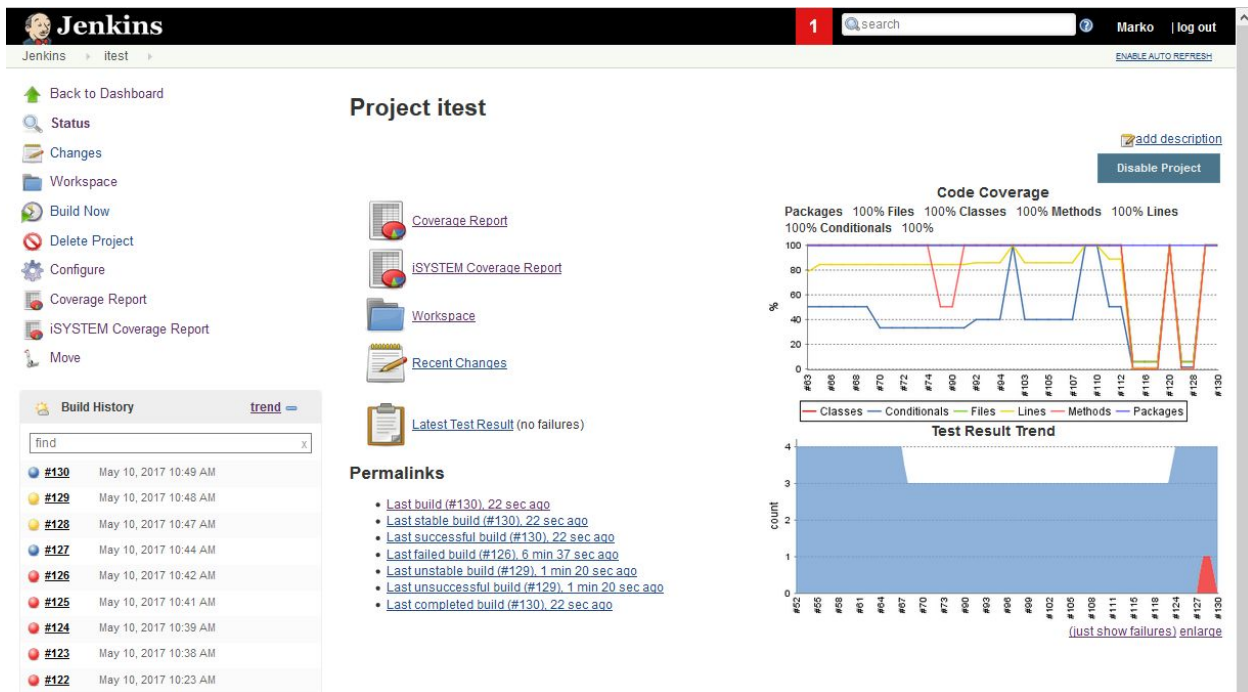


This document describes what's new and noteworthy in testIDEA. Headings indicate version and release date.

9.17.4 (2017-07-12)

Test script generated with testIDEA can now export coverage in format suitable for Cobertura plugin in Jenkins. This way we can see coverage trend on the project page in Jenkins. See testIDEA help, section *Tasks | Continuous Integration with iSYSTEM and Jenkins* for details.



The screenshot shows the Jenkins web interface for a project named 'itest'. The top navigation bar includes the Jenkins logo, a search bar, and user options like 'Marko' and 'log out'. The main content area is divided into several sections:

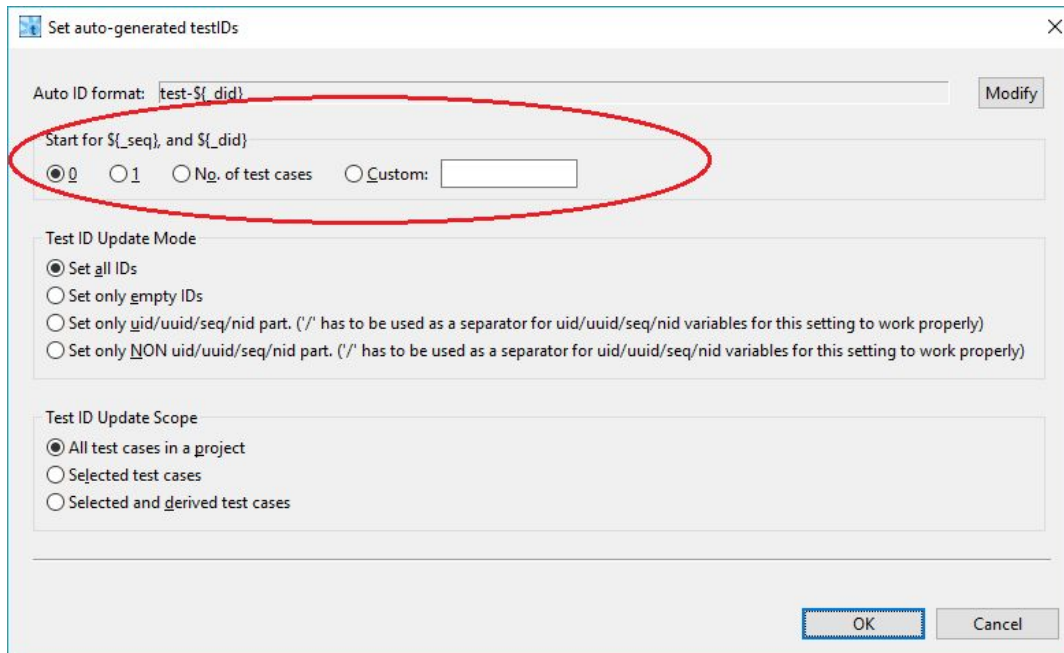
- Left Sidebar:** Contains navigation links such as 'Back to Dashboard', 'Status', 'Changes', 'Workspace', 'Build Now', 'Delete Project', 'Configure', 'Coverage Report', 'iSYSTEM Coverage Report', and 'Move'.
- Project itest:** The main header for the project page.
- Build History:** A table listing recent builds with columns for build number, status, and time.

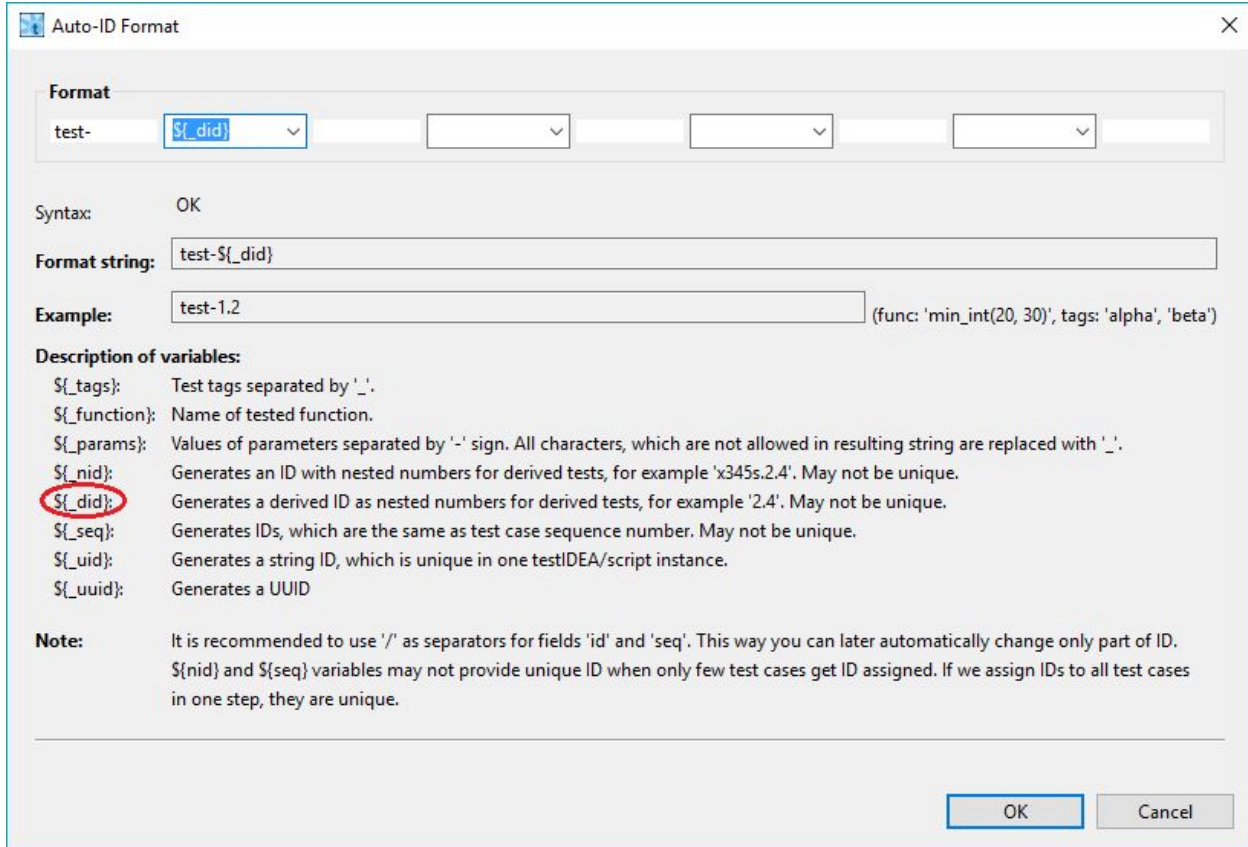
Build Number	Status	Time
#130	Success	May 10, 2017 10:49 AM
#129	Success	May 10, 2017 10:48 AM
#128	Success	May 10, 2017 10:47 AM
#127	Success	May 10, 2017 10:44 AM
#126	Failure	May 10, 2017 10:42 AM
#125	Success	May 10, 2017 10:41 AM
#124	Success	May 10, 2017 10:39 AM
#123	Success	May 10, 2017 10:38 AM
#122	Success	May 10, 2017 10:23 AM
- Project Actions:** Links to 'Coverage Report', 'iSYSTEM Coverage Report', 'Workspace', 'Recent Changes', and 'Latest Test Result (no failures)'. There are also buttons for 'add description' and 'Disable Project'.
- Code Coverage:** A line graph showing coverage percentages for Packages, Files, Classes, Methods, and Lines across various build numbers. The y-axis represents percentage from 0 to 100. The x-axis shows build numbers from #53 to #130. The graph shows high coverage (near 100%) for most metrics, with some fluctuations in the 'Classes' and 'Files' categories.
- Test Result Trend:** A bar chart showing the count of test results (successes and failures) for each build. The y-axis is 'count' from 0 to 4. The x-axis shows build numbers from #53 to #130. Most builds have a count of 4, indicating all tests passed. There is a notable drop to 1 for build #127, which is highlighted with a red triangle, indicating a failure.

9.17.5.0 (20.07.2017)

Improved automatic setting of test IDs

Added start value for $\${_seq}$ when setting test IDs, added new host var $\${_did}$ for testIDs. The new host var hierarchically numbers derived tests, eg 1.3.4.





Extrapolation of strings in table editor

If cell with string content is selected for extrapolation in table editor, then its content is copied to all other selected cells.

9.17.6.0 (31.07.2017)

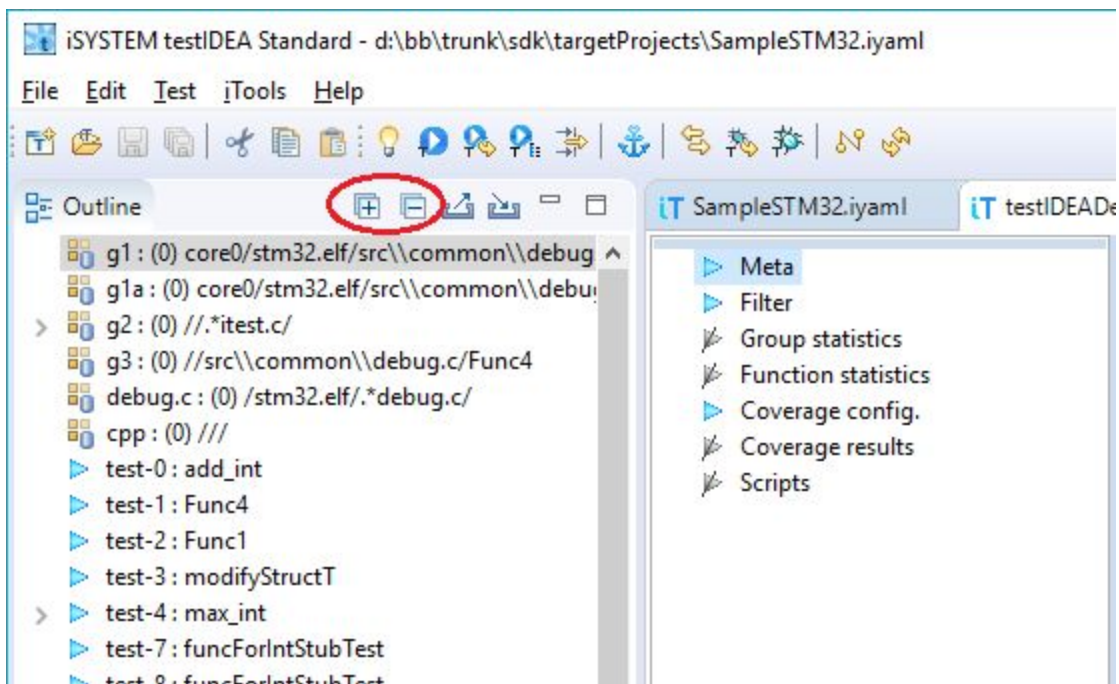
Number of conditions added in function cvrg in groups stats.

Coverage for function in group now contains more detailed info for condition coverage - cond. true, false, and both.

stm32.elf	"src\listUtils.c	"countLessThan	0	/	0.0% (0/72)	0.0% (0f, 0t, 0b) / 4	0
stm32.elf	"src\listUtils.c	"maxElement	1	100.0% (1) / 0.0% (0) / 0.0% (0)	100.0% (72/72)	100.0% (0f, 0t, 2b) / 4	1
stm32.elf	"src\listUtils.c	"minElement	1	100.0% (1) / 0.0% (0) / 0.0% (0)	100.0% (72/72)	100.0% (0f, 0t, 2b) / 4	1
stm32.elf	"src\listUtils.c	"sumList	1	100.0% (1) / 0.0% (0) / 0.0% (0)	100.0% (64/64)	100.0% (0f, 0t, 1b) / 2	1
stm32.elf	"src\pidController.c	"controllerLoop	0	/	0.0% (0/96)	/ (0f, 0t, 0b) / 0	0

Toolbar buttons for collapsing and expanding groups and test cases

Buttons were added to Overview tree. Expand button supports CTRL (expand selected only) and SHIFT (expand selected one level only) modifiers.



9.17.23.0 (10.11.2017)

Integer truncating changed to proper rounding method in table editor interpolator.

9.17.37.0 (30.1.2018)

Flame graphs added to diagrams section. This graph shows time spent in each call stack. The detailed description is available at [CPU Flame Graphs](#), except that testIDEA shows execution time, not execution count.



See also testIDEA help for description of all possibilities, section Concepts | Test Case editor | Diagrams.