



This document and all documents accompanying it are copyrighted by iSYSTEM AG and all rights are reserved. Duplication of these documents is allowed for personal use. In all other cases, written consent from iSYSTEM is required.

iSYSTEM AG. All rights reserved.
All trademarks are property of their respective owners.

www.isystem.com

Contents

IOM6 Hub

Package content	4
Assembling IOM6 Hub on iC5700	5
User Notes	9

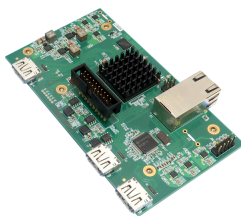
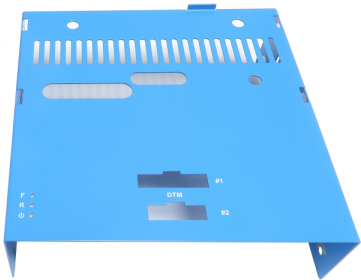
IOM6 Hub

This manual shows how to assemble the IOM6 Hub on the [iC5700](#) BlueBox.

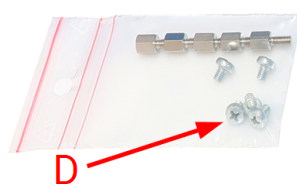
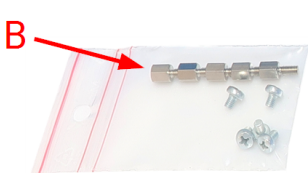
Package content

The IOM6 Hub (Ordering code IC57031) is delivered with the following components:

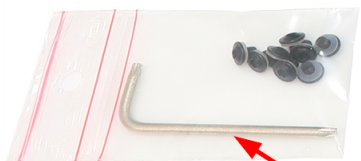
iC5700 Cover	IC57031 PCB	IC57031 Cover
--------------	-------------	---------------



5x standoffs (B)	8x screws (C)	5x screws (D)
------------------	---------------	---------------



Torx TX10	Ethernet cable (1m)	
-----------	---------------------	--



Torx TX10



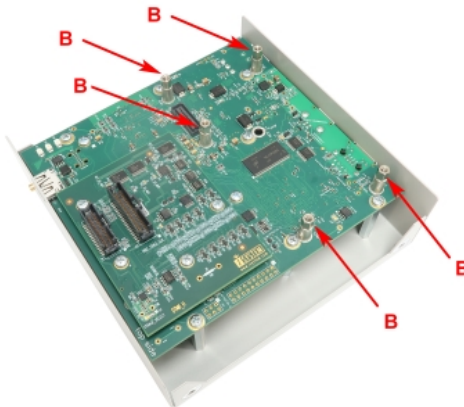
Assembling IOM6 Hub on iC5700

To assemble the IOM6 Hub on the iC5700 BlueBox, follow the steps below.

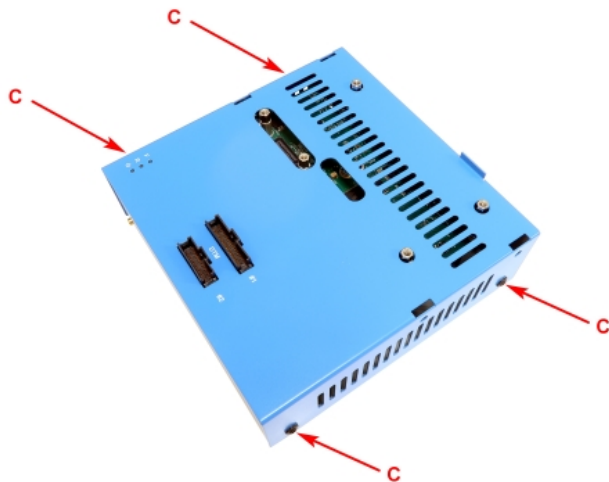
- 1 Remove the 4 screws (A) using included Torx TX10 and remove the iC5700 cover. The old cover will be no longer required since the new one comes along with the IOM6 Hub.



- 2 Use the hex screwdriver to tighten 5 standoffs (B). Be careful not to use excessive force when tightening the standoff.



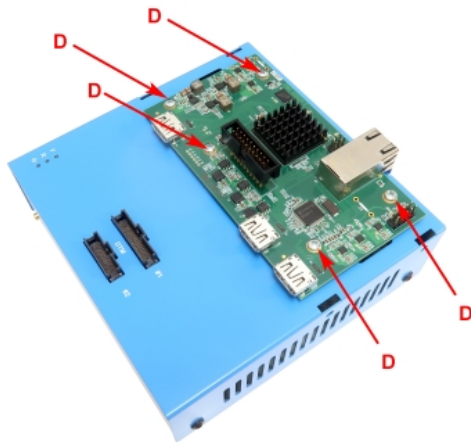
- 3 Carefully place the new cover over the IC5700 and tighten it with 4 torx screws (C).



- 4 Carefully place the IOM6 Hub on top and press it down in order to make a good connection.



- 5 Tighten the IOM6 Hub with 5 screws (D) using Phillips's screwdriver.



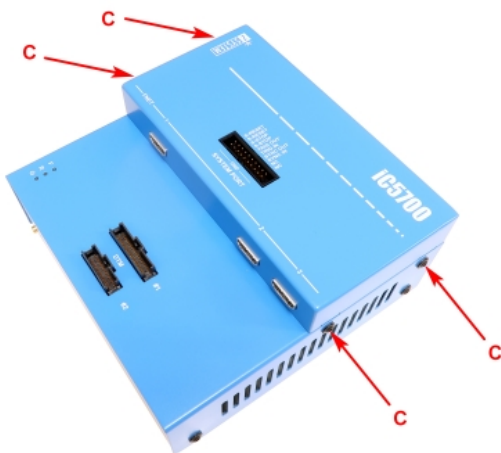
- 6 Tilt the IOM6 Hub cover and slide it over the FNet connectors. Do not push the rear of the cover down yet!



- 7 Bend the FBridge connector's *EMI panel finger shield* inward and carefully push the IOM6 Hub cover down.



- 8 Tighten the IOM6 Hub cover with 4 torx screws (C).



For further instructions on connecting the assembled device to a target and other iSYSTEM tools, refer to the [iC5700 User Manual](#).

This page is intentionally left blank.

This page is intentionally left blank.

This page is intentionally left blank.

iSYSTEM has made every effort to ensure the accuracy and reliability of the information provided in this document at the time of publishing. Whilst iSYSTEM reserves the right to make changes to its products and/or the specifications detailed herein, it does not make any representations or commitments to update this document.

iSYSTEM. All rights reserved.